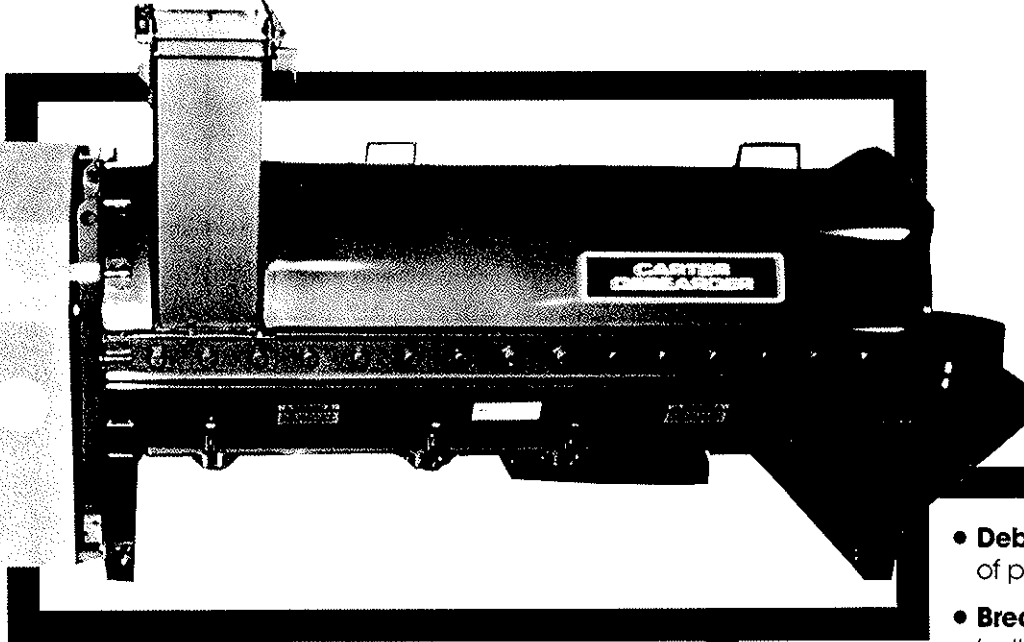


The Carter Debearder

The Carter Debearder was designed primarily to debarber barley, but . . . it has since become a very versatile machine.

There is no appreciable loss of saleable weight of grains using the Debearder. The gain is accomplished by the removal of tips, awns and loose glumes which allows kernels to nest closer together.



Available with direct drive as illustrated

- **Debeard barley** — improve appearance of product.
- **Break-up** alfalfa pods, grass clusters, flax balls, crested wheat, fescues, brome.
- **Hull** "whitecaps" in wheat, subterranean clover.
- **Clip oats** — polish and raise test weight. Used throughout the industry for various classes of oats.
 - Seed Oats** — making them easier to drill, easier and faster to clean, raising the test weight, polishing and improving appearance.
 - Market Oats** — by clipping lightly test weight is increased and appearance is enhanced.
 - Poultry & Race Horse Oats** — removing excess fibres, adding a polished lustre, increasing the product value.

CARTER DAY

The Carter Day Principle

The Debearder operates by means of multiple steel beater arms rotating among similar stationary arms. The rotating bars are completely edged with a super hard material to resist wear. They are factory installed on a 15° angle which serves to rub the

commodity, as well as to convey it through the machine. The pitch of each arm is adjusted — where more or less threshing action is essential — merely by installing it on the opposite side of the central shaft, positioned to the desired angle.

FEATURES

- Various new uses for the machine have brought about the need for greater horsepowers and heavier construction. Heavier shafting, larger bearings and special beaters are now incorporated in standard construction.
- SPECIAL FEATURE — The bottom of the machine can be quickly opened for complete, fast, easy cleanout. Bottom discharge doors permit safe handling of fragile seed. Sand is also dropped by these doors.
- Optional variable speed drive for 15 and 20 HP motors — speed range 365 to 1,067 RPM.
- Optional air system to remove fines and light, loose material from inlet and outlet. Consists of mounted fan and drive with suction air pipes connected to the inlet and outlet.

SPECIFICATIONS

It is very important that the feed inlet to this machine have a slide cut off or other means of feed control so rate of flow will not exceed the discharge capacity. This precaution eliminates motor overloading which could reduce the efficiency of the job, cut capacity and overstress both the machine and the motor.

Approximate Weight:

Debearder without drive or motor 470 lbs. crated

Drive:

The price of Debearder with direct drive does not include drive sheaves, belts, channel drive frame, motor rails or motor.

Light work 7½ HP, 1750 RPM motor

Heavy work 10-15-20 HP, 1750 RPM motor

Diameter of rotor shaft 2-3/16"

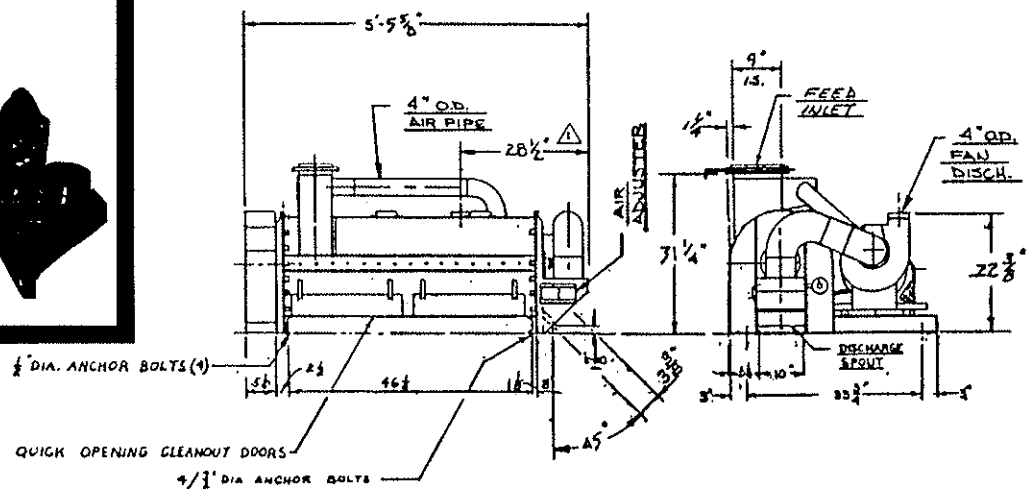
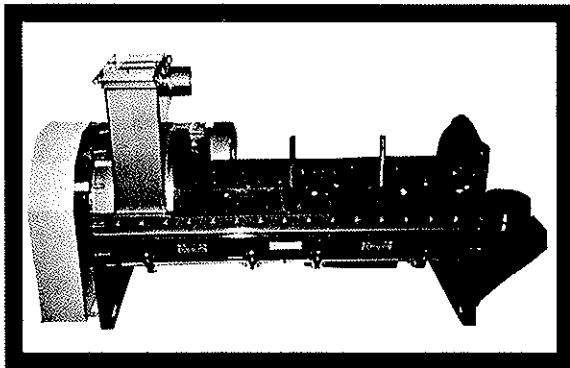
NOTE: If customer uses own motor, specify:

- a) frame size
- b) shaft size
- c) whether new or old N.E.M.A. specifications

CAPACITIES

All processors know that operating speeds and capacities are never constant. Exact settings can only be determined during each run. These approximate figures will serve as a guide:

1. De-beard barley at 550 RPM — output 250 to 400 bushels per hour.
2. Oats — breaks doubles, de-awns, clips glume tips at 550 RPM — output 300 to 400 bushels per hour (variety determines speed).
3. Break up flax balls — output up to 200 bushels per hour.
4. Grass (speed not established) — output 150 to 200 pounds per hour.



CARTER DAY

IN U.S.A.

CARTER-DAY COMPANY

500 73rd Ave. N.E., Minneapolis, MN 55432
(612) 571-1000 Telex: 20-1669 Cable: CAMACO
Fax/Telecopier: (612) 571-3012

IN CANADA

**CARTER DAY INDUSTRIES
(CANADA) LTD.**

P.O. Box 488, Winnipeg, Canada R3C2J6
(204) 786-5781 Telex 07-57327
Fax/Telecopier: (204) 783-9404

Vancouver - Calgary -
Thunder Bay - Toronto

OVERSEAS

CARTER-DAY INTERNATIONAL, INC.

500 73rd Ave. N.E., Minneapolis, MN 55432
(612) 571-1000 Telex: 20-1669 Cable: CAMACO
Fax/Telecopier: (612) 571-3012