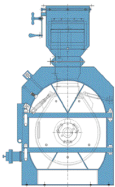


# CARTER DAY P-SERIES HAMMERMILL



The P Series Hammermill is ideal for lower capacity grinds that require medium to fine particle size reduction. The P-Series Mill can also be used on all free flowing granular materials and products containing oil and fat.

A unique feature of this mill is that its not dependent on venting air. There is an internal air circulation which vents the mill on its own.



### Unique Features of the P Series Mill:

- Reversible Teardrop-shaped 360 degree screen for increased capacity.
- Overhung rotor design offers quick and easy access to the screen, hammers and the rotor assembly.
- The hammer to screen tolerance is 1/8" offering minimal screen buildup and maximum output.
- Hammer tip speeds up to 21,6 00 feet per minute on our largest model.
- Unit features a Gravity Inlet with magnet or screw feeder to match your application.
- Top Center feed design or force feed option for meter feeding.

# CARTER DAY XLT HAMMERMILL



The serviceability of this machine matches its exceptional size reduction capabilities: Double roller glide door Two point pivotal screen carriage design for easy screen access. Two piece screen design for easy screen replacement Easy Hammer replacement Easy Pin and Collar Replacement Highest quality Hammers and Screens

- Unique Features:**
- Bi-directional rotation rotor
  - Flat Bar Screen Carriage providing superior support and minimal screen obstruction.
  - Quick Change Screen Carriage Design.
  - Fully Reversible
  - Replaceable throat plates.
  - Wear Liner Kits

The XLT Hammermill is used for grinds that require medium to fine particle size reduction. It can be used on all free flowing granular materials which require size reduction.

# CARTER DAY HAMMERMILL CAPACITIES



### MEDIUM TO FINE PARTICLE SIZE COMMON GRAINS

Model	Motor Range	Hammers & Pattern	Screen Area	Venting CFM	6-854th Lbs/Hp/Hr	6-854th Lbs/Hp/Hr	6-854th Lbs/Hp/Hr	6-854th Lbs/Hp/Hr	6-854th Lbs/Hp/Hr
P160	5-10	3X3 C	360	450	228-304	156-208	143-190	-	-
P195	15-30	3X3 C	425	600	-	-	-	-	-
P241	40-75	3X3 C	808	1100	-	-	-	-	-
XL1 24313	25-75	3X3 C	954	1200	-	-	-	-	-
XL1 24320	40-125	3X3 C	1422	1800	-	-	-	-	-
XL1 24326	100-200	3X3 C	1854	2400	304-380	208-260	176-220	190-240	256-320
MZH 4222	75-150	3X3 C	1270	1600	-	-	-	-	-
MZH 4222	100-150	3X3 C	1795	2300	-	-	-	-	-
MZH 4241	250-300	3X3 C	3370	4300	-	-	-	-	-
MZH 4250	300-350	3X3 C	4158	5200	-	-	-	-	-

### MEDIUM TO FINE PARTICLE SIZE COMMON HILLS AND SCREENING

Model	Motor Range	Hammers & Pattern	Screen Area	Venting CFM	6-854th Rice Hulls 7um <sup>3</sup>	6-854th Cst. Hulls 8um <sup>3</sup>	6-854th Gr-Screen 22um <sup>3</sup>	6-854th Soy Hulls 2um <sup>3</sup>	6-854th Sun Hulls 15um <sup>3</sup>
P160	5-10	3X3 C	360	450	72-96	72-96	84-112	108-144	50-66
P195	10-30	3X3 C	425	700	-	-	-	120-160	72-96
P241	40-75	3X3 C	808	1300	-	-	-	-	-
XL1 24313	25-75	3X3 C	954	1500	-	-	-	-	-
XL1 24320	40-125	3X3 C	1422	2000	-	-	-	-	-
XL1 24326	100-200	3X3 C	1854	3000	96-130	96-130	112-140	228-304	96-120
MZH 4216	75-150	3X3 C	1270	2000	-	-	-	-	-
MZH 4222	100-150	3X3 C	1795	2900	-	-	-	-	-
MZH 4232	150-200	3X3 C	2583	4100	-	-	-	-	-
MZH 4241	250-300	3X3 C	3370	5400	-	-	-	-	-
MZH 4250	300-350	3X3 C	4158	6700	-	-	-	-	-

### MEDIUM TO FINE PARTICLE SIZE COMMON MEALS AND CAKES

Model	Motor Range	Hammers & Pattern	Screen Area	Venting CFM	6-854th Soy Meal 20um <sup>3</sup>	6-854th Corn Meal 42um <sup>3</sup>	6-854th Corn Gluten 20um <sup>3</sup>	6-854th Soy Cakes 15um <sup>3</sup>	6-854th Condition 20um <sup>3</sup>
P160	5-10	3X3 C	360	450	278-360	126-168	240-320	72-96	120-160
P195	15-30	3X3 C	425	600	288-384	138-184	-	-	-
P241	40-75	3X3 C	808	1100	-	-	270-360	90-120	150-200
XL1 24313	25-75	3X3 C	954	1200	-	-	-	-	-
XL1 24320	40-125	3X3 C	1422	1800	-	-	-	-	-
XL1 24326	100-200	3X3 C	1854	2400	-	-	-	-	-
MZH 4216	75-150	3X3 C	1270	1600	330-440	162-216	360-450	120-150	200-250
MZH 4222	100-150	3X3 C	1795	2300	-	-	-	-	-
MZH 4232	150-200	3X3 C	2583	3300	-	-	-	-	-
MZH 4241	250-300	3X3 C	3370	4300	-	-	-	-	-

### POCKET FEEDER CAPACITIES ON WHOLE GRAINS

Machine Combination	Hammermill Motor HP	Feeder Model	Number of Flows	Number Pockets	Lbs/hr Corn 56	Lbs/hr Wheat 60	Lbs/hr Barley 48	Lbs/hr Corn 60	Lbs/hr Sorghum
XL1 24313	25-75	107RF	5	40	5700-86500	3900-64400	3300-56700	3600-64400	4800-43500
XL1 24320	40-125	107RF	7	56	9100-60500	6200-64500	5300-51100	5700-44500	7700-60500
XL1 24326	100-200	107RF	9	72	23800-71400	16800-85200	13200-65300	14300-40500	19500-77400
MZH 4216	75-100	107RF	5	40	22800-45500	15600-46400	13200-36700	14300-46400	19200-43500
MZH 4222	100-150	107RF	7	56	35400-62500	20800-64000	17600-51100	19000-64500	25600-60000
MZH 4232	150-200	107RF	9	80	45900-86200	31200-80000	26400-72800	28500-90000	38400-86200
MZH 4241	250-300	107RF	13	104	76200-111800	52000-119200	44000-94400	47500-119200	64800-111800
MZH 4250	300-350	107RF	18	138	91500-137200	62400-148400	52800-115800	57000-146400	78800-137200

### Notes On Above Capacities:

Hammermill capacities are in Pounds to be converted to pounds per horse power per hour. Moisture Content not to exceed 13%. Product Identification: Wheat is soft or standard, Corn is Non GMO, Grain Identified by Bushel weight, Hulls and Meal lbs/cuft. Full scale customer product testing available. The 42 Series XLT is not shown in the capacities charts above but is still available for order at this time.

# CARTER DAY Sizing & Separating Equipment



## HAMMERMILL LINE FOR MEDIUM TO EXTRA FINE GRINDING



### CARTER DAY INTERNATIONAL

500 73rd Ave. N.E. Minneapolis, Minnesota 55432 Tel: (763) 571-1000 Fax: (763) 571-3012

### CARTER DAY INTERNATIONAL

500 73rd Ave. N.E. Minneapolis, Minnesota 55432 Tel: (763) 571-1000 Fax: (763) 571-3012

## CARTER DAY MULTI-ZONE HAMMERMILL



The MZH Hammermill is used for grinds that require medium to fine particle size reduction. It can be used on all free flowing granular materials ranging from alfalfa to wheat.

The Dual Rotation Multi-Zone Hammermill consist of a double radius cutting plate with staggered slotted rows and offset rotor with 3/16" hammer to cutting plate clearance .

The cutting plates offer significant size reduction prior to the products contact to the screen making size reduction more effective.

We also use a use of Secondary Cutting Plate at the screen carriage discharge offering product flow interruption sending it back into the hammers path for further size reduction .

Since we are using cutting plates to perform a significant portion of the size reduction, we are able to use larger screen perforations. Larger hole allows thicker screens for extended screen life and reduced air venting volumes required.

The hammer tip speed is up to 19,200 feet per minute which gives optimum grinding performance when used in conjunction with our cutting plate system.

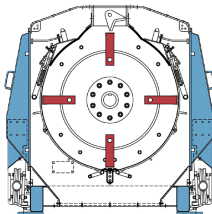
In conclusion, compared to other mills all of this offers you a higher pounds per horsepower per hour production or horsepower savings in production.

The drive package is factory aligned to a rigid tubular frame for accurate alignment of motor and mill.

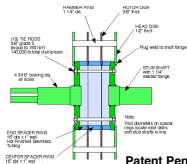
We use a direct drive coupling which allows for exceptional alignment and reliability. The stub shaft bearings are of the highest industrial grade providing long life and reliability.

### THE SERVICEABILITY OF THIS MACHINE MATCHES ITS EXCEPTIONAL SIZE REDUCTION CAPABILITIES:

- Double roller glide doors
- Two point pivotal screen carriage design
- Two piece screen design for easy replacement
- Side slide out rotor access
- Easy Hammer replacement
- Easy Pin and Collar Replacement
- Keyed Bearing Replacement
- Highest quality Hammers and Screens
- Replaceable AR Wear Liner Kits Available



## CARTER DAY MULTI-ZONE HAMMERMILL

The design of our stub shaft rotor assembly is unique: 10 times stronger bending and torsional stiffness than conventional rotors.

18% lighter rotor, yet provides 18% greater stored kinetic energy  
Increased diameter of spacer rings eliminates need for hammer bumper rods.

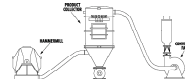
Stub shaft design allows for lower cost replacement

Patent Pending

Hammermills need CFM in order to perform to their fullest potential so we offer the following options:  
Air discharge sub-base are designed for each of our models which include an air velocity control damper.

We have Bin-Vent System designed for each of our MZH Models. We provide the system less the product collector.

We also have many alliances with Product Collector companies who can assist you.

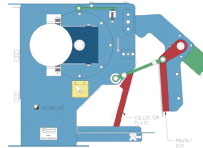


## CARTER DAY POCKET FEEDER AND FEED



### STAINLESS STEEL POCKET FEEDER TO HANDLE ALL FREE FLOWING GRANULAR MATERIALS. THE FEEDER OFFERS THE FOLLOWING:

- 5-16 Rows to covering all our hammermill designs
- Adjustable gate for product blow by or FM Blow By
- Product flow magnet with stripper plate.
- Pneumatic control or manual control magnet system.
- Shaft mounted gear reduction drive (direct drive)
- Pocket liners for high fat low flow products
- Inlet Air Flow Control
- Full Rotor Removal from Drive end for service.
- Collector Tray for tramp metals
- Optional Load Minder for MZH,COMMANDER AND XLT



ADDITIONAL FEED OPTIONS AVAILABLE:  
Destoner bolt on option for MZH, XLT and Commander  
Inlet with magnet for MZH,XLT and Commander  
Screw feeder option available for light bulk density product.

CARTER DAY INTERNATIONAL  
500 73rd Ave. N.E. Minneapolis, Minnesota 55432 Tel: (763) 571-1000 Fax: (763) 571-3012

## CARTER DAY COMMANDER HAMMERMILL




The Commander Hammermill Center Feed is used for grinds that require fine to extra fine particle size reduction. It can be used on all free flowing granular materials and materials which contain high fat,oil or moisture. The range of products could be from flours.pet food, aquafeed and a like.

The Commander Hammermill uses single radius high impact cutting-plate which has staggered slotted rows on either side of the hammermill for dual rotation milling. The cutting plates offer significant size reduction prior to the product contact of the screen making size reduction more effective.

The use of hard faced cutting plates as the significant size reducer offers a very fine particle distribution which leads to a more uniform pellet.

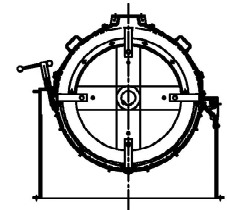
The hammer to screen tolerance is 1/8" offering minimal screen buildup and increases product flow through the screen. In addition the staggered head plate rotor design offers full hammer to screen coverage.

The hammer tip speed is up to 22,600 feet per minute which gives optimum grinding performance when used in conjunction with our cutting plate system.

The drive package is factory aligned to a Mono-Weld frame for accurate alignment of motor and mill. We use a direct drive coupling offering exceptional alignment and reliability. The shaft bearings are of the highest industrial grade providing long life and reliability.

### THE SERVICEABILITY OF THIS MACHINE MATCHES ITS EXCEPTIONAL SIZE REDUCTION CAPABILITIES:

- Flip up door access
- Point pivotal screen carriage design for easy screen changes
- Heavy Duty Screen Carriage to positively hold thinner gauge screens in place.
- Top Housing Removal rotor access
- Easy Hammer access
- Easy Pin and Collar access
- Easy Bearing Replacement



CARTER DAY INTERNATIONAL  
500 73rd Ave. N.E. Minneapolis, Minnesota 55432 Tel: (763) 571-1000 Fax: (763) 571-3012